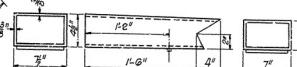




NOTE:
Oak Headers to be included in volume of Class 5" Concrete.
Oak Header bolts to be paid for at unit price bid for reinforcing steel.
Cast Iron Drains to be paid for at unit price bid for Cast Iron and Cast Steel.



DETAIL OF CAST IRON DRAIN

MARK SIZE LENGTH

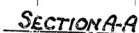
BENDING DIAGRAM

S₁ 1" 22'-10"

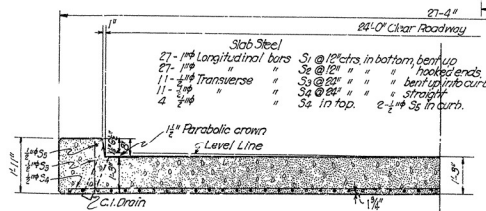
S₂ 1" 22'-0"

S₃ 1/2" 27'-9"

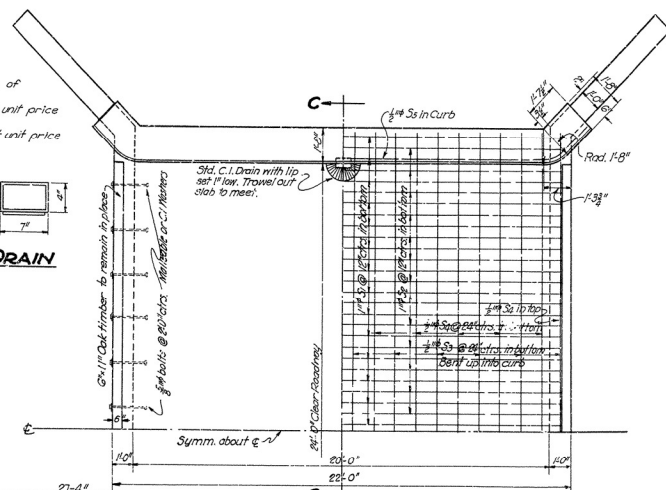
The bending diagram shows three segments, S₁, S₂, and S₃, with their respective lengths and dimensions. Segment S₁ has a length of 22'-10" and a width of 1". Segment S₂ has a length of 22'-0" and a width of 1". Segment S₃ has a length of 27'-9" and a width of 1/2". The diagram also shows a 17'-0" dimension for the top segment and a 20'-6" dimension for the middle segment. A 46' dimension is shown for the bottom segment. The diagram is labeled 'BENDING DIAGRAM' and 'MARK SIZE LENGTH'.



Mark	Size	Length	'A'	'B'	Bending Diagram
F1	$\frac{1}{2}"$	$51.2"$	$24.10"$	$24.1"$	
V1	$\frac{1}{2}"$	$81.8"$	$61.61"$	$24.1"$	
Fe	$\frac{1}{2}"$	$31.4"$	$24.10"$		
F3	$\frac{1}{2}"$	$32.10"$	$28.01"$	$24.1"$	
H1	$\frac{1}{2}"$	$39.5"$	$27.31"$	$61.0"$	
H2	$\frac{1}{2}"$	$81.9"$	$61.91"$	$24.10"$	
H3	$\frac{1}{2}"$	$61.3"$	$45.31"$	$24.10"$	
H4	$\frac{1}{2}"$	$34.0"$	$7.01"$	$24.1"$	
H7	$\frac{1}{2}"$	$61.0"$	$46.01"$	$51.0"$	



SECTION C-C
Scale: $\frac{1}{2}'' = 1'-0''$



PARTIAL PLAN SHOWING REINFORCING

DETAILS OF 20' SLAB BRIDGE
OVER BAILEY BRANCH
OLA-HOT SPRINGS ROAD
GARLAND COUNTY
ROUTE 7 SEC. 7

ARKANSAS STATE HIGHWAY COMMISSION
LITTLE ROCK, ARK.

Drawn By: W.T.M. Date: 2-17-33
Traced By: E.A.W. Date: 2-22-33
Checked By: _____ Date: _____

Scale: $\left\{ \begin{array}{l} \frac{1}{2} \text{ in.} = 1 \text{ ft.} \\ \text{and as noted} \end{array} \right.$

BRIDGE NO. 1780 DRAWING NO. 3452